

# Putting you first

@office@spelthorneconservatives.org.uk  
www.spelthorneconservatives.org.uk  
@spelthorneca

## Protect Spelthorne – Vote Conservative on 2nd May



### Spelthorne Conservatives



Caring for you and your family whilst making Spelthorne a great place to live.

We are pleased to outline our policies and priorities for the next four years and ask for your support in continuing to make our Borough even better.

During the last four years we have worked hard to protect and strengthen our finances in the face of cuts being imposed from elsewhere. We are now in a position to concentrate on our future priorities, primary of which is to provide homes for our residents and to make Spelthorne a better place to live and work.

We are of course mindful of challenges such as the proposed expansion of Heathrow and are determined to ensure the best outcome for our residents.

Only a Conservative run Council has the experience, confidence and enthusiasm to take Spelthorne forwards for the next four years and into the future thereafter.

A great deal of time and effort has gone into bringing Spelthorne to where it is today - the future is exciting if properly managed. I ask for your support to continue this work.

**Please vote Conservative on Thursday 2nd May**

**Ian Harvey – Leader, Spelthorne Conservatives**

### Our 5 main Priorities:

#### 1 Housing Local Plan and Green Belt

Providing homes for Spelthorne residents is quite simply the number one priority of a **Conservative** led Spelthorne Council and we are firmly committed to this. We have a clear focus on building homes for our residents, not simply relying on private sector housebuilders.

Our current plans will deliver in excess of 620 homes over the next five years. These will include Key Worker, Affordable and emergency accommodation, including a single homeless hostel as well as homes for “open market” rent. Only your **Conservative** run Spelthorne has the ambition and drive to deliver this.

Mindful of the importance of our Green Belt to the integrity and cohesion of Spelthorne we are working very hard to protect our significant Green Belt assets and a **Conservative** administration will continue to do so. We are developing our Local Plan with this firmly in mind. **Conservatives** support Green Belt and will continue to do so.

#### 2 Economy, Employment and Transport

Spelthorne Means Business and many businesses have come to appreciate this. Strong economic performance is crucial to a vibrant and stable Borough delivering excellent employment prospects for our residents. Your **Conservative** run administration has, and will continue to work hard to protect and enhance the financial viability of our High Streets and businesses located in the Borough. We are planning for ambitious regeneration in both Staines and Ashford High Streets.

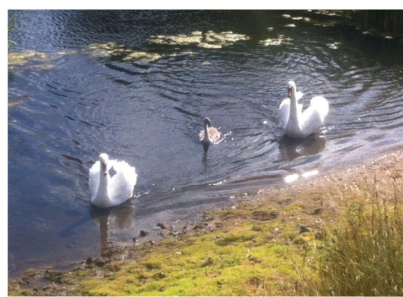
Pinewood Shepperton Studios have recently shown their commitment to a vibrant Spelthorne with their plans to transform their Shepperton Studios site. We welcome this boost to our economy and employment options, including, crucially, “digital” opportunities for our young people.

An expanded Heathrow Airport offers a once in a lifetime opportunity for boosting our economy and employment opportunities at all levels. We are, and will continue to engage with Heathrow positively to ensure Spelthorne residents gain the maximum possible benefits.

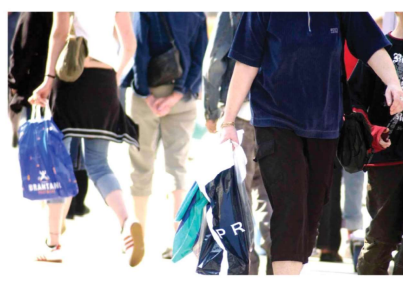
We are pursuing an ambitious plan for a light rail scheme to link Staines with a newly expanded Heathrow in an environmentally sustainable way. We also continue to press for Spelthorne to be included in Zone 6 and Oyster Card.

We are also mindful of parking pressures, in particular in Ashford. After the election Ashford **Conservative** Councillors will be working on plans to significantly address this.

**Continued Overleaf ...**



Keeping the Green Belt Green for residents to enjoy



Regeneration plans for both Staines and Ashford High Streets



Planning for a light rail scheme to link Staines with a newly expanded Heathrow

**Caring and campaigning for the community**



### 3 Tackling Crime and Protecting our Community

We understand how important controlling crime is, including what is often called "low level" such as Anti-Social Behaviour. We are especially concerned at the level of drug and knife crime and are determined to protect our young people.

We will continue to take a tough line on this and work with both Surrey Police and our own Joint Enforcement Team to crack down on all aspects.

We are also continuing to invest in CCTV cameras and to work unstintingly to make sure Spelthorne is and remains a safe and pleasant place to live.

### 4 Welfare and Care, the Environment and Leisure

We continue to work hard to meet the needs of all our residents. We have recently acquired new SpelRide minibuses, we continue to provide a full Meals on Wheels service and have just finished an extension to the Greeno Day Centre in Shepperton. Our financial stability enables us to continue to support all our residents including the more vulnerable.

We are working on new plans for a replacement Spelthorne Leisure Centre and expect to be consulting further on these in the summer of 2019.

We are caring for the environment and are heavily committed to continuing to do so, including planting 850 trees in Spelthorne as part of our WW1 Centenary commemoration.

We will continue to work hard to maintain and improve community facilities including buildings and open spaces for residents' enjoyment, including progressing plans to protect Staines Park with "Fields in Trust" status.

We recently brought our grounds maintenance back in house and are seeing the benefits all around the Borough.

We are taking bold steps to enhance the benefit of having the River Thames on our boundary and are developing plans to improve the access and utilization of this asset, including building a jetty and encouraging increased river boat tours and electric day boat hire.

Our financial stability means a Conservative run Spelthorne can and will continue to be committed to Welfare, the Environment and Leisure.

### 5 Property Investments and Combating Cuts

Over the last three years your Conservative Council has successfully developed investment strategies that have not only filled funding gaps that would otherwise have resulted in substantial cuts to services but have allowed us to improve our core service to residents.

These prudent strategic investments ensure that your Conservative run Spelthorne Council can continue to provide the services that you our residents need and expect. It is these investments that enables us to commit a future Conservative administration to our plans.

For the last three years we have delivered a budget that has **NO cuts to services, NO sale of assets, NO use of reserves** and **below inflation** increases in our Council Tax Precept.

We firmly believe that, whilst acknowledging there is always room for improvement, Spelthorne is in a great position to look to a bright future under a Conservative run administration.

## Spelthorne Conservatives



Working with Surrey Police to tackle crime in Spelthorne



Focussing on a caring community



Maintaining and improving Community Parks



Building homes for the future

## Local Conservatives for Local People

Vote for your 3 local Conservative candidates on Thursday 2nd May

Ashford Common	Ashford East	Ashford North Stanwell South	Ashford Town	Halliford Sunbury West	Laleham Shepperton Green	Riverside & Laleham	Staines	Sunbury Common	Sunbury East	Stanwell North	Staines South	Shepperton Town

